



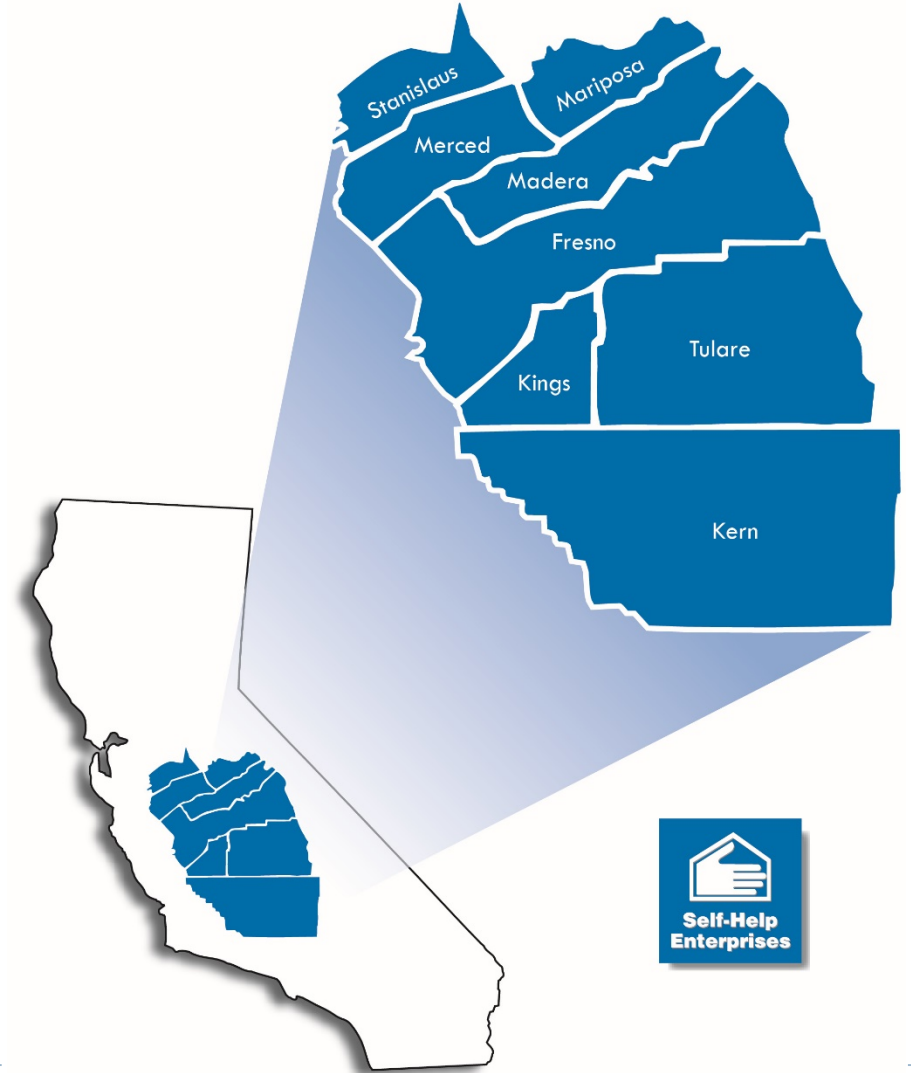
# Sustainable Groundwater Management Act (SGMA) and Disadvantaged Communities Engagement

Presentation for the Mid-Kaweah Groundwater Sustainability Agency  
Jessi Snyder, Self-Help Enterprises, 1/10/2017

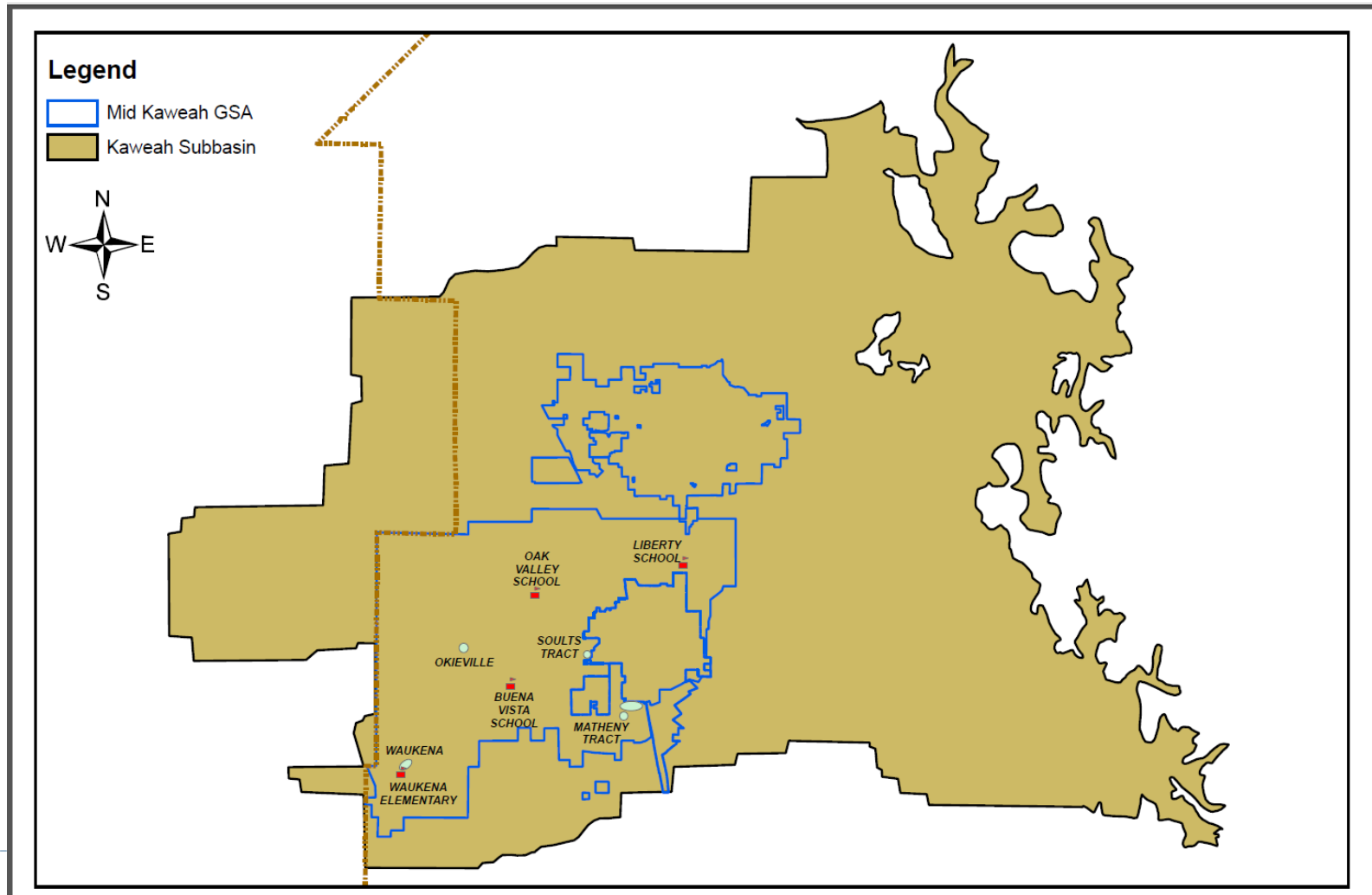
# Self-Help Enterprises (SHE)

---

- ▶ Self-Help Enterprises is a nationally recognized housing and community development organization (non-profit organization)
- ▶ Our mission is to work together with low-income families to build and sustain healthy homes and communities.
- ▶ Since 1965, Self-Help Enterprises' efforts have touched the lives of over 50,000 families in the San Joaquin Region.



# Disadvantaged Communities with the Mid-Kaweah Groundwater Sustainability Agency



# Okieville – Highland Acres

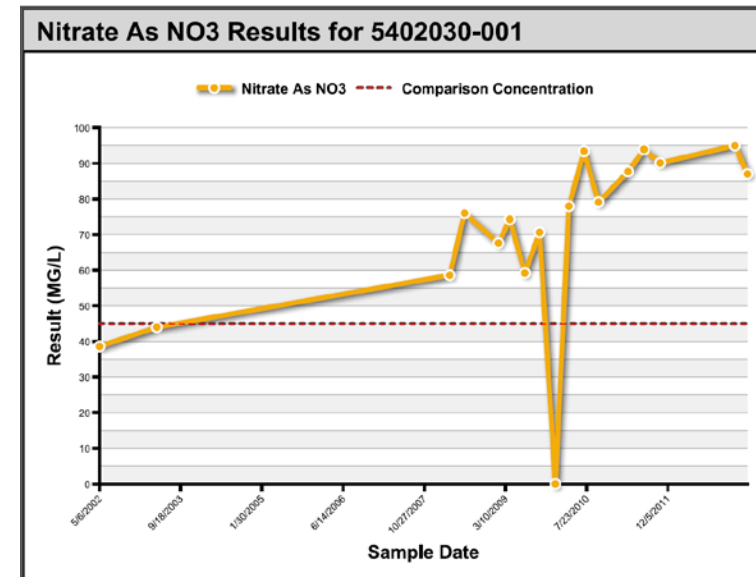
- Severely disadvantaged community located 5 miles west of the City of Tulare
- Approximately 100 homes
- 17 wells, serving 27 homes went dry (May 2016)
- Temporary water tanks installed in 13 properties
- Okieville-Highland Acres Mutual Water Company
- Approx. \$2.7 Million (USDA, DWR and SWRCB) was secured to drill a community well, install a filling station, construct a distribution system and install water meters.



# Waukena

- ▶ Approx. 30 homes (domestic wells)
- ▶ High levels of nitrates (levels as high as 210 ppm which is almost five times the MCL of 45 ppm) and uranium
- ▶ Residents are purchasing bottled water
- ▶ local store – Waukena Market

## Waukena Market





# Souls Tract

---

- ▶ Souls Mutual Water Company
- ▶ Approx. 100 users
- ▶ Single well, produces water that exceeds the Nitrate Maximum Contaminate Level (MCL) of 45 mg/L
- ▶ Secured State funding to conduct a feasibility study that will evaluate an intertie with the City of Tulare water system and replacement of the water distribution system in Souls Tract.



# Matheny Tract

---

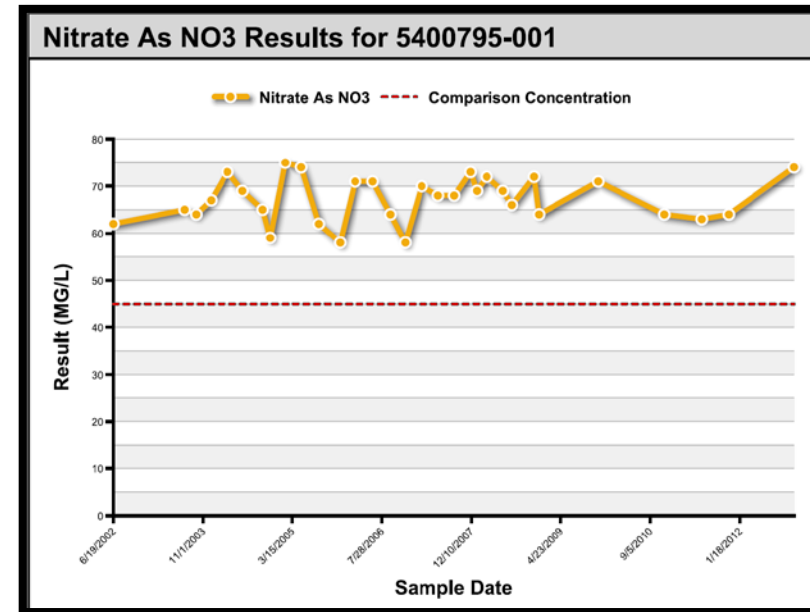
- ▶ Water provided by the City of Tulare via a full water system consolidation completed in 2016 (addressed arsenic contamination)
- ▶ Improvements funded by State Revolving Fund & Prop 84 included new water mains, meters, fire protection and well destruction of Pratt Mutual Water Company's old wells.
- ▶ Population of about 1200 people
- ▶ Wastewater collection & treatment is needed



# Schools

- ▶ Waukena Elementary
  - ▶ Nitrate Levels over the MCL (56 to 74 mg/L)
- ▶ Buena Vista School
  - ▶ Blending water from 2 wells to treat for nitrate and arsenic (raw water exceeds MCLs)
- ▶ Oak Valley School
  - ▶ Treating for arsenic over the MCL (15-18 ug/L)
- ▶ Liberty Elementary School
  - ▶ Total coliform violations
- ▶ Schools require different outreach methods – School Board Mtgs, Mtg with staff, Office of Education

## Waukena Elementary





# DAC Engagement Opportunities

---

## **Vision/Objective**

DAC members serve on stakeholder advisory committee

DAC outreach is included in the GSA's communications plan

DAC members support the development of the Groundwater Sustainability Plan



# DAC Engagement Opportunities (cont'd)

---

- ▶ **Ways SHE can Support the Mid-Kaweah GSA**
- ▶ Develop Contact List and Educational Materials
- ▶ Convene a meeting of DAC stakeholders
- ▶ Attend School Board Mtgs and/or Work with the Tulare County Office of Education
- ▶ Hold Educational Tours (cross learning amongst DACs and Non-DAC members)



# Questions/Thank you!

---

▶ Contact information:

Jessi Snyder, Community Development Manager (Tulare, Kings & Fresno counties) 559-802-1693; [jessis@selfhelpenterprises.org](mailto:jessis@selfhelpenterprises.org)

Maria Herrera, Community Development Manager (SGMA, IRWWM and special projects) 559-802-1676; [mariah@selfhelpenterprises.org](mailto:mariah@selfhelpenterprises.org)

Main number: 559-651-1000

[www.selfhelpenterprises.org](http://www.selfhelpenterprises.org)

---

