
MEFFORD AIRPORT

Office of Safety, Compliance and Facilities
September 5, 2023





PROJECT # 1

2.5 M FOR APRON





Deery Pro Hot Crack Filler 7,000 In. ft.

OUR GOAL

Tuf-Cote Asphalt Seal - 185,400 sq. ft.





PHASE



PROJECT #2



PROJECT #2



The 12-mil-thick polyethylene film is heated to shrink to the roof, securely wrapping it to create a fully-functioning, leak-free roof that can stay in place for up to 12 months, resisting water and wind and preventing further damage.

MULE HIDE SHUR-GUARD

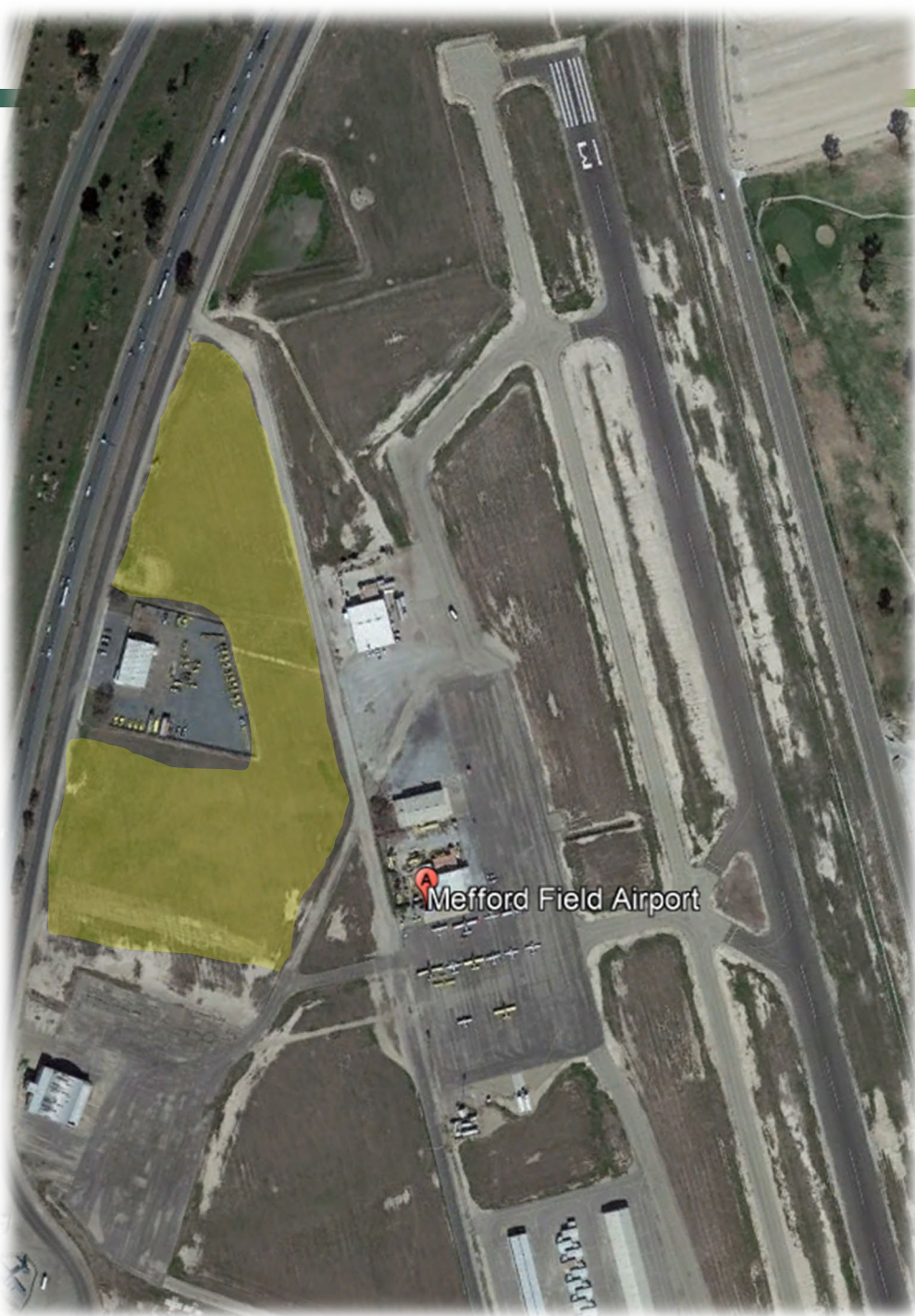
ADDITIONAL PROJECTS



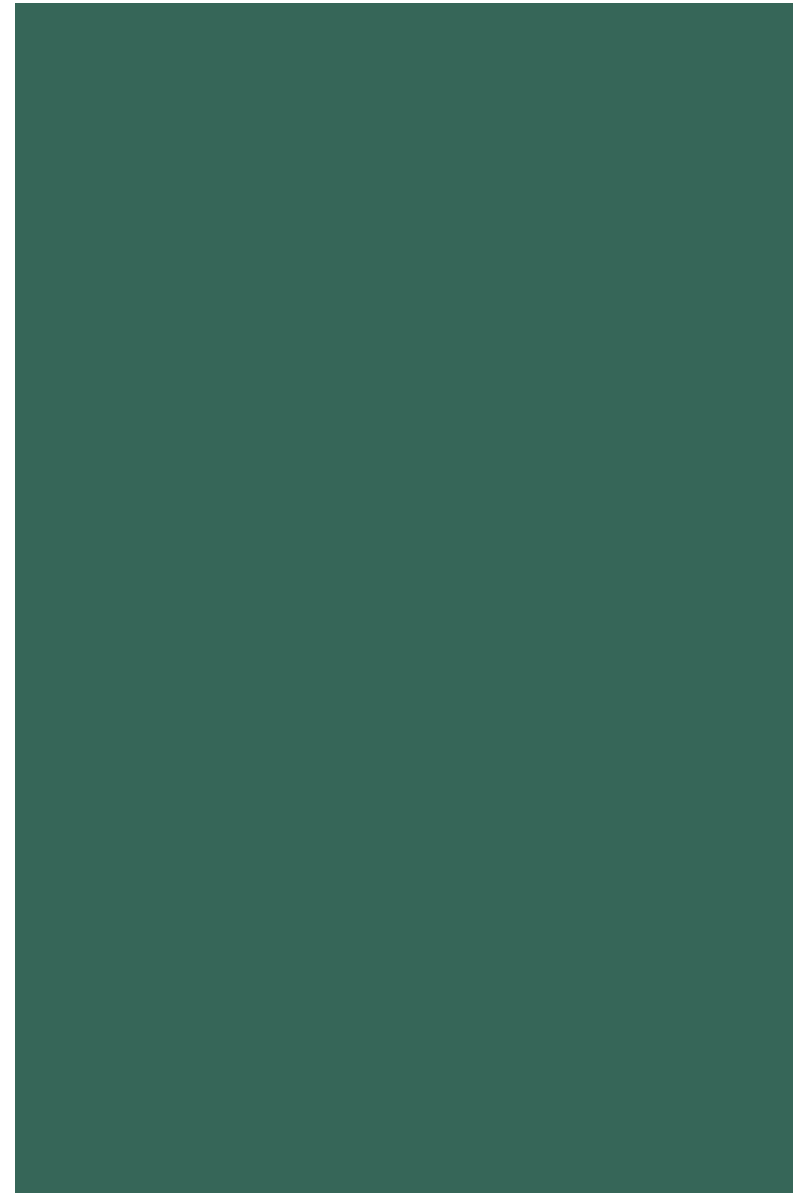
HANGARS

- 10 T Hangars
- 20 Regular Hangars (10 medium, 10 large)
- 2 privately owned T Hangars
- 8 businesses





Mefford Field Airport



ACIP WORKSHEET SUMMARY

Fiscal Year		AIP Grant	Project Scope and Description	Federal (BIL)	Federal (AIP)	State Share	Sponsor Share	Total
FAA	City							
2022	21/22	19	Rehabilitate main apron, relocate segmented circle & primary wind cone (construct).		**\$480,000	\$0	\$0	**\$480,000
2023	22/23	20	Rehabilitate parallel & connecting taxiways including geometry modifications (localized remove & reconstruct, slurry seal, marking), rehabilitate south end taxilane and area paving, new lighting circuit including edge lights, signs, conduit, and conductor, and regulator (design only). PCI = 63		\$477,000	\$23,850	\$29,150	\$530,000
2024	23/24	BIL 1	Two helipads and access gate improvements (design)	\$162,000		\$8,100	\$9,900	\$180,000
2025	24/25	21	Rehabilitate parallel & connecting taxiways including geometry modifications (localized remove & reconstruct, slurry seal, marking), rehabilitate south end taxilane and area paving, new lighting circuit including edge lights, signs, conduit, and conductor, and regulator (construction). PCI = 63		\$4,410,000	\$220,500	\$269,500	\$4,900,000
2026	25/26	BIL 2	Two helipads and access gate improvements (construct)	\$633,000		\$31,650	\$85,350	\$750,000
2027	26/27		No project.					

NEW LEASES & RATES

- Ten Port-a-Hangars @ \$125/month
 - 19 T-Hangars @ \$150/month
 - Two extended Hangars @ \$160/month
 - Total Rent- \$4431.00
- Ten Port-a-Hangars @ \$170/month
 - 19 T-Hangars @ \$200/month
 - Two extended Hangars @ \$215/month
 - Total Rent- \$5,930



THANK YOU