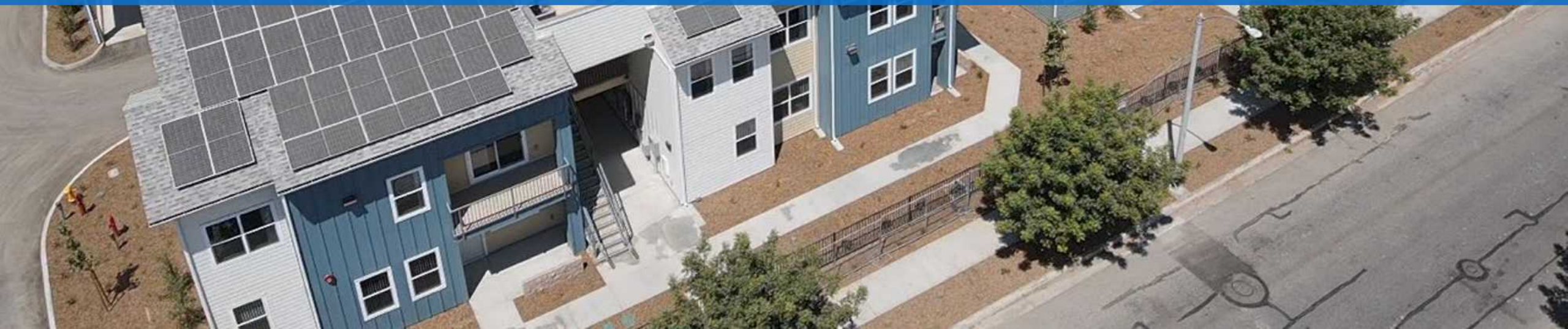




HOUSING PARTNERSHIPS Self-Help Enterprises & City of Tulare

September 5, 2023



Eden House

Project Details

- 22-bed facility in Visalia located at 1627 S. Garden Street
- Acquired and rehabilitated by SHE; opened spring 2020
- Offers immediate housing stabilization for chronically street homeless
- Continued partnership between SHE, Visalia, Tulare and the County
- Shared community asset to maintain
- Creates document ready clients for PSH referral



Operations & Services

- After period of staffing shortages, Eden House to be fully staffed by end of September
- New and improved pet kennels installed in mid-June to accommodate more residents with pets
- Weekly on-site groups include Morning Coffee Break (Wellness Check-In), Work Readiness, and Healthy Living Skills
- Many current residents transitioning to Santa Fe Commons and The Lofts this fall



Santa Fe Commons

Summary

- Located at 537 N. West St.
- Being developed over two phases for a total of 138 affordable units
- 81 units will be complete by early October
- Combination of one, two and three-bedroom units
- 35 Joe Serna, Jr. Farmworker Housing Grant Program (FWHG) units
- 25 No Place Like Home Permanent Supportive Housing (PSH) units
- County service commitment through RH Builders
- Currently in referral process for PSH units



SANTA FE COMMONS *VIEWS*



Santa Fe Commons

Leasing and Encampment Coordination

- All PSH units leased through the Coordinated Entry System.
- Actively receiving referrals from the encampment.
- Coordinating with various service providers including the Kings/Tulare Homeless Alliance, Salt + Light, KingsView, and Kaweah Health.
- There will be two full time supportive services staff on site. RH Community Builders has onboarded the first case manager for the project and will start warm-handoffs from community case managers as applications are approved.
- The first approvals on applications came in last week.
- Leasing is fluid – choice to go to Lofts, Santa Fe Commons, Finca, etc.

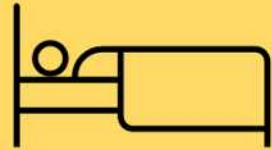


Santa Fe Commons

Welcome Home Kits

Bed and Bath

- Sheets, Blanket, and Pillow
- Bath Towels
- Shower Curtain
- Laundry Basket
- Toilet Paper



Self Care

- Shampoo and Conditioner
- Hand and Body Soap
- Toothbrush and Toothpaste
- Deodorant
- Laundry Detergent



Kitchen Supplies

- Dishes and Utensils
- Basic Cookware
- Can Opener
- Oven Mitt



Apartment Care

- Trash Can and Trash Bags
- Broom and Dustpan
- Mop and Bucket
- Cleaning Supplies



Santa Fe Commons

Welcome Home Kits

Scan to Donate



Choose "Permanent Supportive Housing Fund"

- We're inviting the community to sponsor a Welcome Home Kit for upcoming PSH projects.
- Goal: Provide kits for 80 individuals/families, including Santa Fe Commons and The Lofts.
- Each Kit costs \$350, and we welcome support in any amount.
- Thank you for your support!



**Self-Help
Enterprises**

Questions



Betsy McGovern-Garcia
Vice President
Self-Help Enterprises
(559) 802-1653
betsyg@selfhelpenterprises.org

