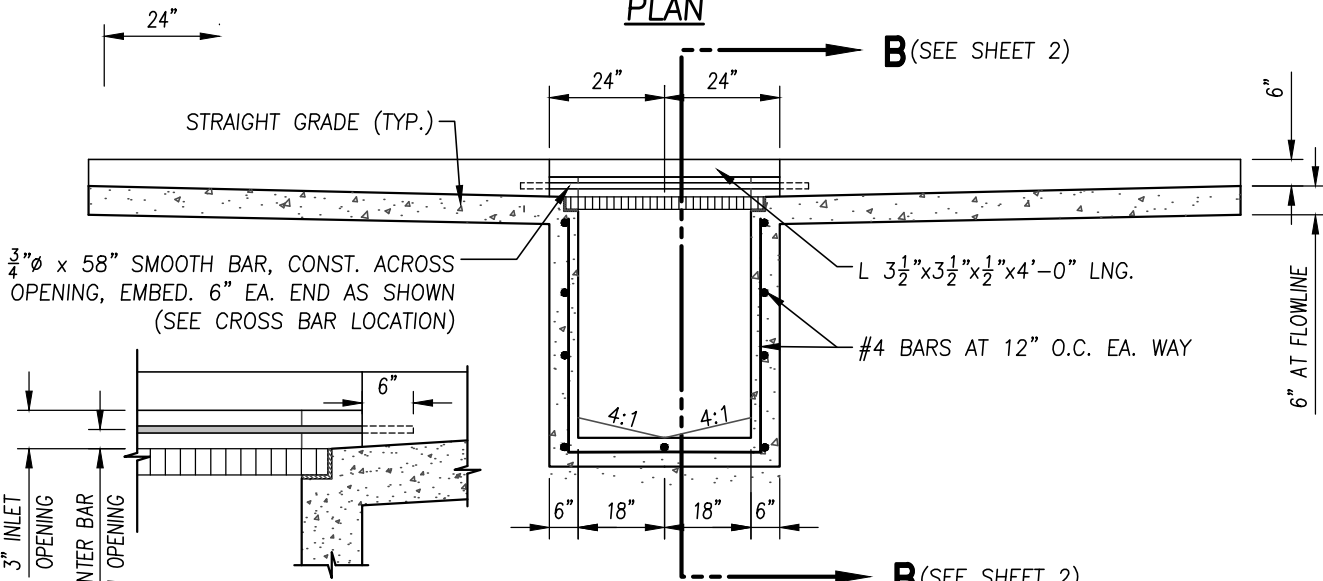
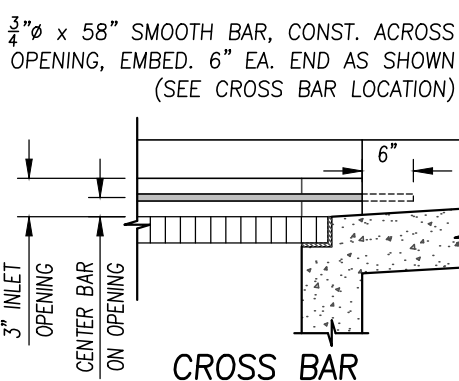


PLAN



SECTION A-A

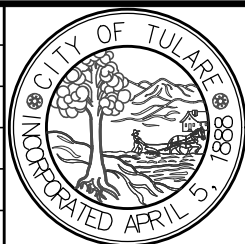


CROSS BAR LOCATION

NOTES:

1. ALL METALS USED EXCEPT CASTINGS AND REINFORCING STEEL SHALL BE STRUCTURAL GRADE STEEL OR BETTER, AND SHALL BE HOT-DIPPED GALVANIZED AFTER FABRICATION. AFTER INSTALLATION, ALL ABRATED SURFACES SHALL BE NEATLY SOLDERED OVER WITH 50-50 SOLDER.
2. CLASS 2 CONCRETE SHALL BE USED FOR ALL STRUCTURES. REBAR TO BE GRADE 60 STEEL CONFORMING TO ASTM A615/A615M.
3. MINIMUM CLEAR SPACING BETWEEN INTERIOR SURFACES OF CONCRETE AND REINFORCING STEEL SHALL BE 1 1/2". MINIMUM COVER WHEN CAST AGAINST SOIL SHALL BE 3".
4. POSITION OF STORM DRAIN LINE LEAVING INLET TO BE AS INDICATED ON PLANS AND INLET FLOOR TO SLOPE TOWARD DRAIN LINE. WHERE TWO OR MORE STORM DRAIN LINES ENTER AN INLET, THE FLOOR SHALL HAVE CHANNEL CONNECTING THE DRAIN LINES.
5. FRAME AND GRATE SHALL BE MATCH-MARKED AND FITTED WITHOUT ROCKING.

REVISIONS	DATE
REVISIONS NO. 1	1/21
REVISIONS NO. 2	4/22



CITY OF TULARE
PUBLIC IMPROVEMENT STANDARD

STORM WATER DROP INLET

DRAWING NO.:

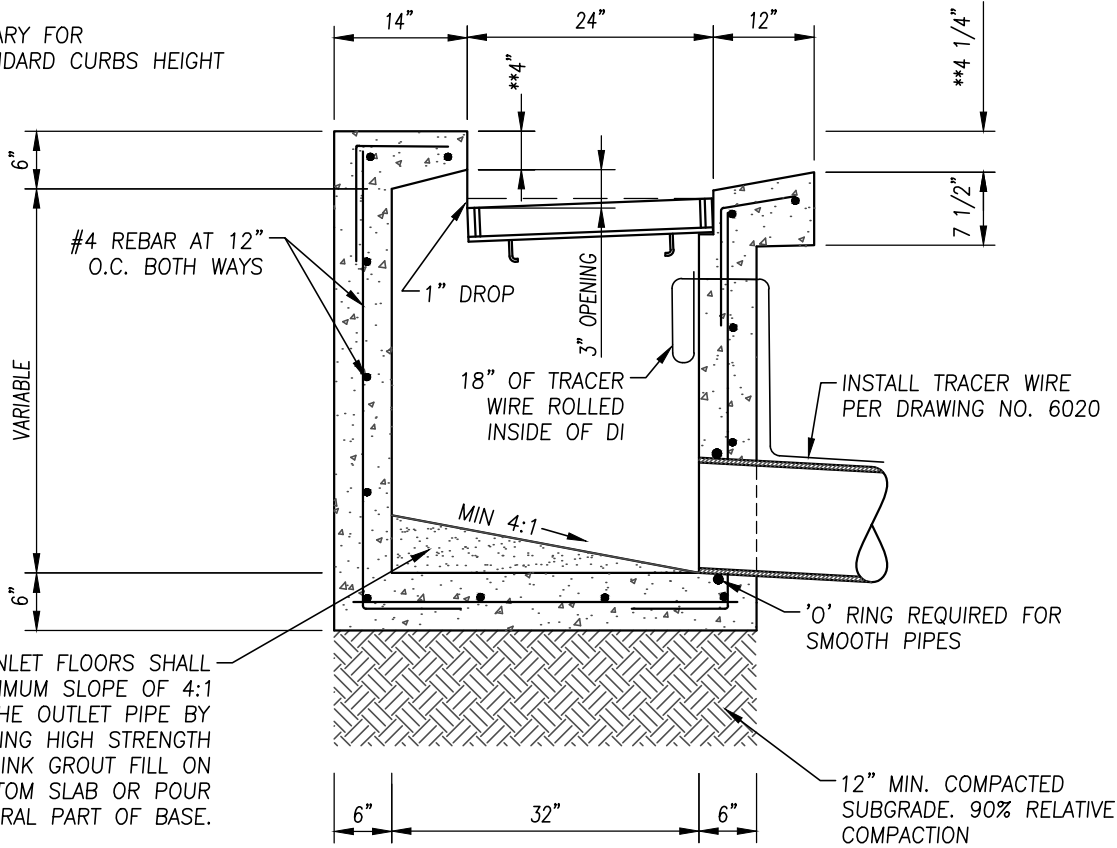
3110

Approved By: *Michael W. Miller*

Date: 04/01/22 City Engineer

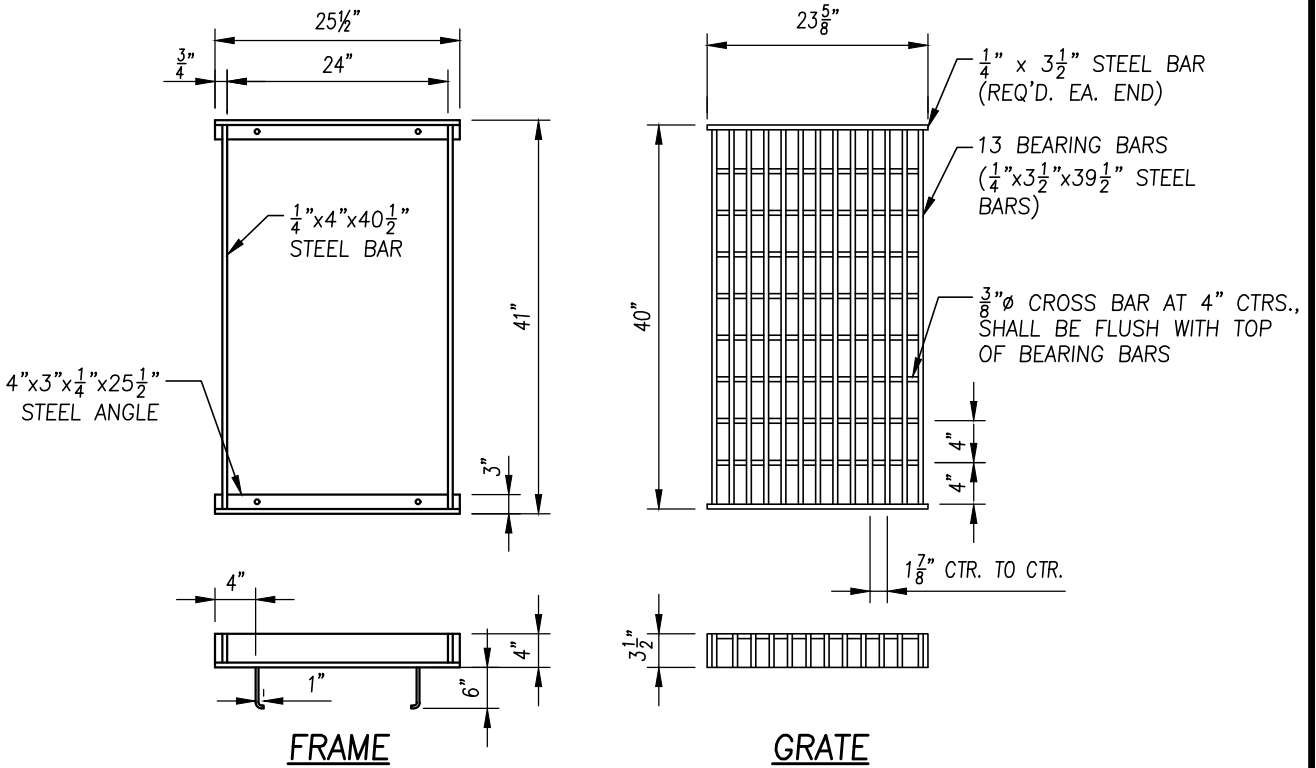
1 of 3

** MAY VARY FOR
NON-STANDARD CURBS HEIGHT

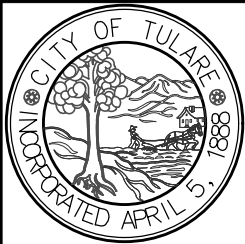


DRAINAGE INLET FLOORS SHALL HAVE A MINIMUM SLOPE OF 4:1 TOWARD THE OUTLET PIPE BY CASTING HIGH STRENGTH NON-SHRINK GROUT FILL ON TOP OF BOTTOM SLAB OR POUR AS INTEGRAL PART OF BASE.

SECTION B-B



REVISIONS	DATE
REVISIONS NO. 1	1/21
REVISIONS NO. 2	4/22



CITY OF TULARE
PUBLIC IMPROVEMENT STANDARD
STORM WATER DROP INLET

Approved By: *Michael W. Miller*
Date: 04/01/22 City Engineer

DRAWING NO.:
3110
2 of 3



STORM DRAIN MARKER

NOTES:

1. STORM DRAIN MARKER PLACED ON TOP OF CURB SHALL BE ALMETEK 304 ANNEALED STAINLESS STEEL OR APPROVED EQUIVALENT AND SHALL READ "NO DUMPING ONLY RAIN IN THE DRAIN". MARKER SHALL HAVE BLUE BACKGROUND WITH STAINLESS STEEL LETTERING. MARKER SHALL BE SURFACE INSTALLED AND ADHERED TO INLET USING TUBE ADHESIVE PER THE MFG'S RECOMMENDATIONS.

REVISIONS	DATE		CITY OF TULARE PUBLIC IMPROVEMENT STANDARD	
REVISIONS NO. 1	1/21		STORM WATER DROP INLET	DRAWING NO.:
REVISIONS NO. 2	4/22		<i>Michael W. Miller</i>	3110
			Approved By: _____	
			Date: 04/01/22 City Engineer	3 of 3