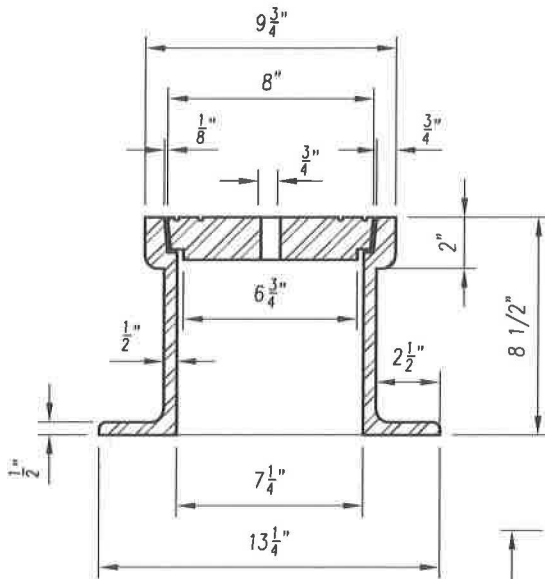
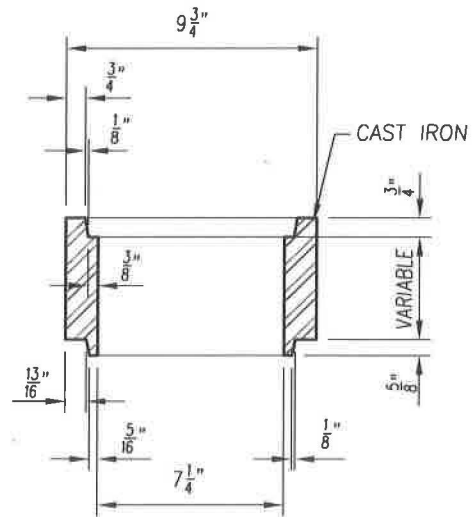


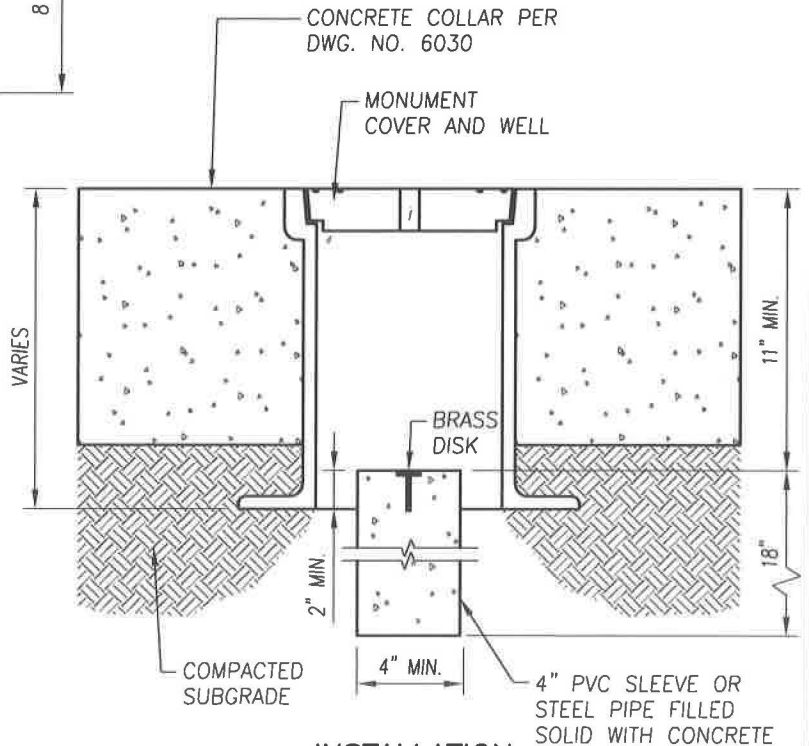
**CAST IRON BASE
& COVER**



SECTION A-A



**EXTENSION RING
SECTION**

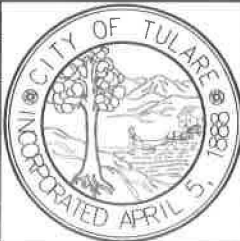


**INSTALLATION
METHOD**

NOTES:

1. BASES, COVERS, & EXTENSIONS TO BE ATLAS FOUNDRY & MFG. CO., RICHMOND, CA.; PINKERTON FOUNDRY, LODI, CA.; OR EQUAL
2. MONUMENT WELLS SHALL BE USED AT SECTION CORNERS, AS DIRECTED BY THE CITY ENGINEER.
3. SEE DWG. NO. 9310 FOR BRASS DISC INFORMATION.

REVISIONS	DATE



CITY OF TULARE
PUBLIC IMPROVEMENT STANDARD
SURVEY MONUMENT & WELL

DRAWING NO.:

9311

Approved By:

Michael W. Miller

Date: 11/15/16

City Engineer

1 OF 1