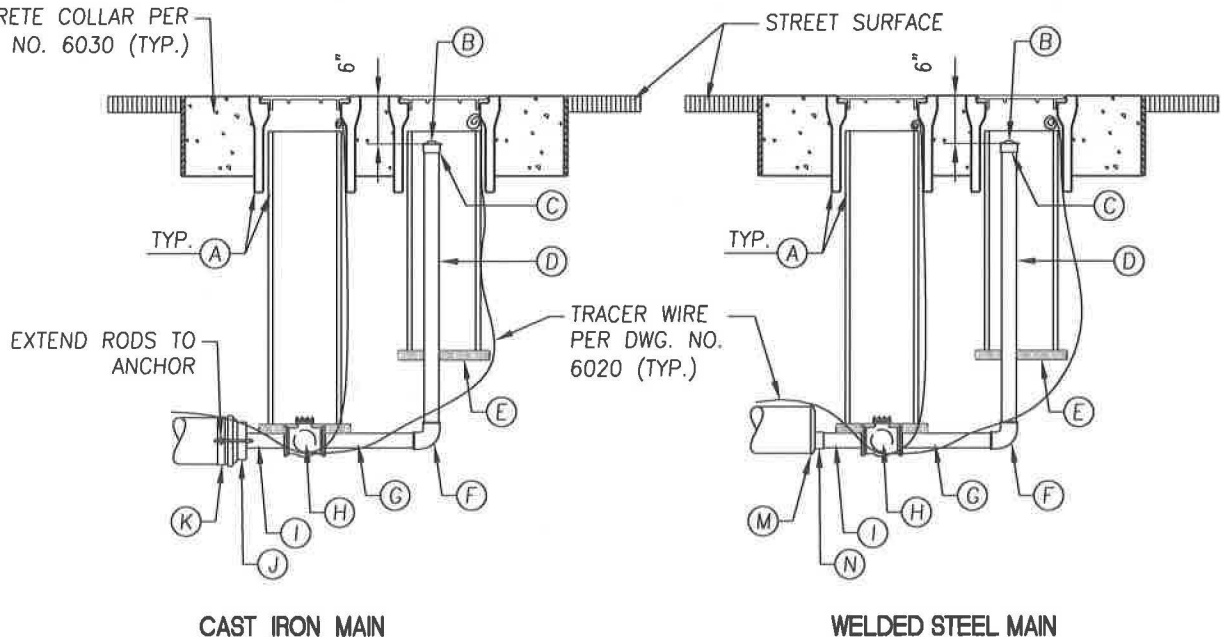


CONCRETE COLLAR PER  
DWG. NO. 6030 (TYP.)



CAST IRON MAIN

WELDED STEEL MAIN

ITEM	MATERIAL	NO. REQ. EA.	CAST IRON MAIN					NO. REQ. EA.	WELDED STEEL MAIN				
			4"	6"	8"	10"	12"		4"	6"	8"	10"	12"
A	GATE POT & COVER - 8"	2	✓	✓	✓	✓	✓	2	✓	✓	✓	✓	✓
B	PLUG- 2" SCREW BLOCK	1	✓	✓	✓	✓	✓	1	✓	✓	✓	✓	✓
C	COUPLING - 2" SCREW GALV.	1	✓	✓	✓	✓	✓	1	✓	✓	✓	✓	✓
D	RISER - 2"x30" SCREW GALV.	1	✓	✓	✓	✓	✓	1	✓	✓	✓	✓	✓
E	REDWOOD BLOCKING - 2"x4"x12"	4	✓	✓	✓	✓	✓	4	✓	✓	✓	✓	✓
F	ELL - 2" SCREW GALV. 90°	1	✓	✓	✓	✓	✓	1	✓	✓	✓	✓	✓
G	NIPPLE - 2"x12" SCREW GALV.	1	✓	✓	✓	✓	✓	1	✓	✓	✓	✓	✓
H	CURB STOP - 2"	1	✓	✓	✓	✓	✓	1	✓	✓	✓	✓	✓
I	NIPPLE - 2"x6" SCREW BRASS	1	✓	✓	✓	✓	✓	1	✓	✓	✓	✓	✓
J	PLUG, COLLAR - PLUG & RODS	1	4"	6"	8"	10"	12"	-	-	-	-	-	-
K	COLLAR - SINGLE	1	4"	6"	8"	10"	12"	-	-	-	-	-	-
L	SLEEVE - C.I.	-	-	-	-	-	-	-	-	-	-	-	-
M	BUMPED HEAD	-	-	-	-	-	-	1	4"	6"	8"	10"	12"
N	COUPLING - 2" SCREW BLOCK	-	-	-	-	-	-	1	✓	✓	✓	✓	✓

NOTE:  
PAINT RODS, COLLARS, LUGS AND ENTIRE  
BLOW-OFF ASSEMBLY WITH E.C. 244 ADHESIVE.

REVISIONS	DATE		<b>CITY OF TULARE</b> PUBLIC IMPROVEMENT STANDARD <b>BLOW-OFF ASSEMBLY</b>		DRAWING NO.:	
					<b>6340</b>	
				Approved By: <i>Michael W. Miller</i>	City Engineer	
				Date: 11/15/16		
						1 OF 1