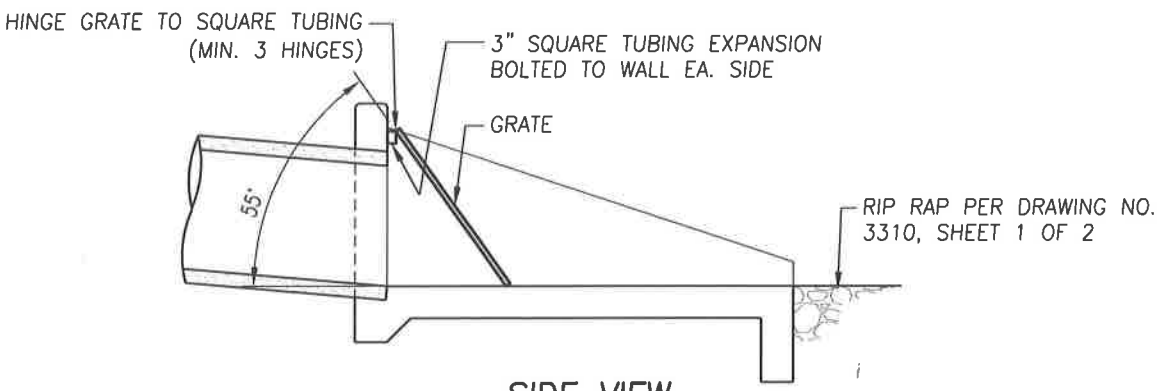
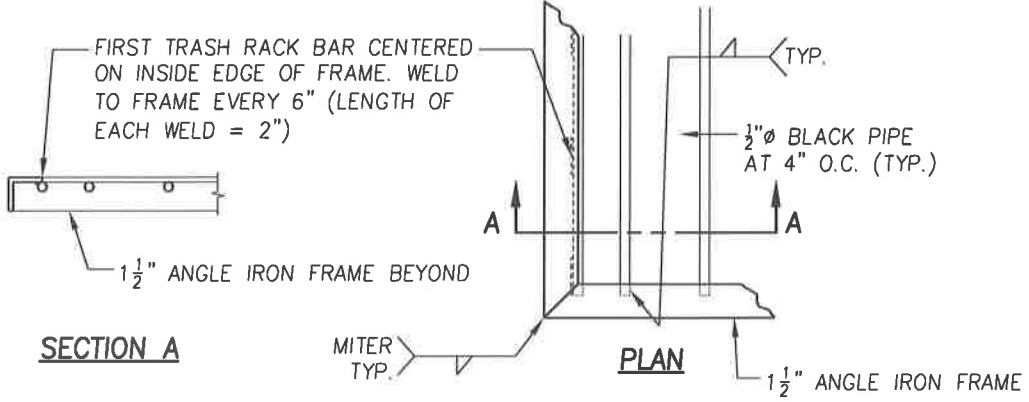


**PLAN VIEW**



**SIDE VIEW**



**GRATE CONSTRUCTION**

**NOTE:**  
 PAINT GRATE WITH (3) COATS OF INDUSTRIAL STRENGTH BLACK PAINT. GRATE SHALL BE CLEAN AND FREE OF RUST PRIOR TO PAINT APPLICATION.

| REVISIONS | DATE |
|-----------|------|
|           |      |
|           |      |
|           |      |
|           |      |



**CITY OF TULARE**  
 PUBLIC IMPROVEMENT STANDARD  
 CAST-IN-PLACE  
 OUTLET STRUCTURE

DRAWING NO.:  
**3310**

Approved By: *Michael W. Miller*  
 Date: 11/15/16 City Engineer