

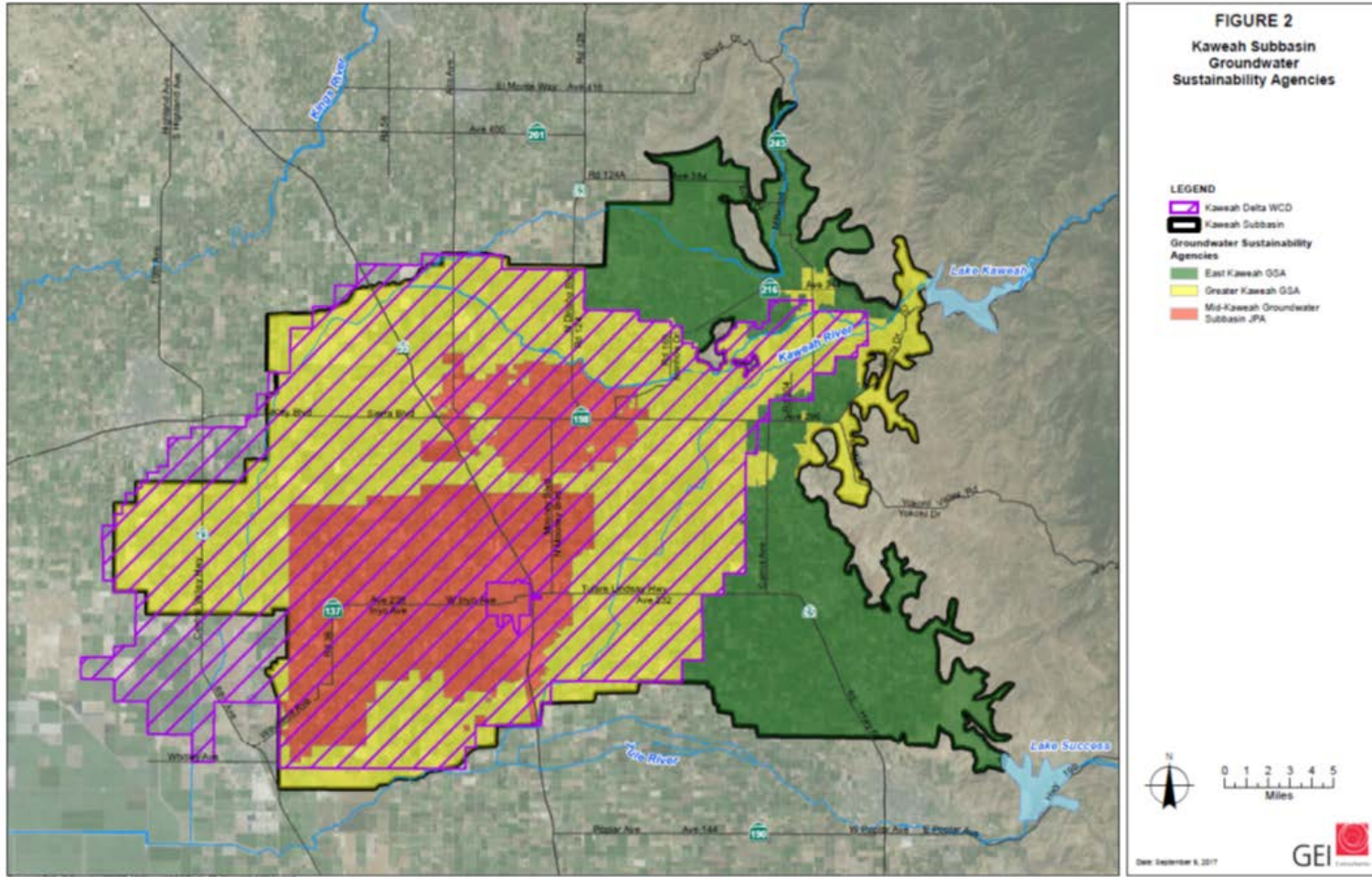
# Mid-Kaweah Groundwater Sustainability Agency – Board Meeting

## Kaweah Subbasin Coordination Activities Report

**Tulare Public Library – 491 North M Street – Tulare ,  
CA**

Tuesday, October 9, 2018, 3:00pm

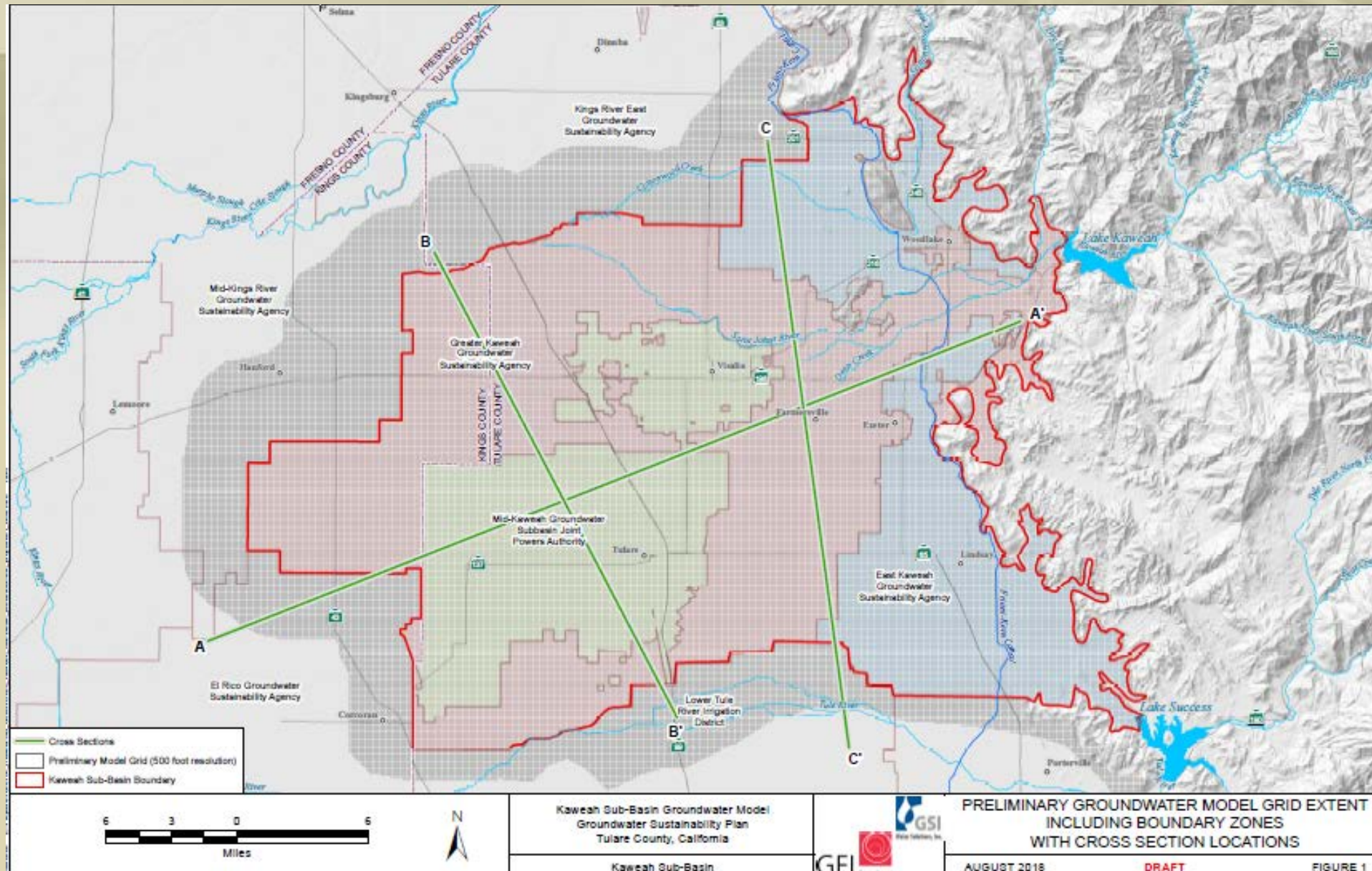
# Subbasin Overview



- Groundwater Modeling
- SKYTEM
- Data Management System
- New Monitoring Wells
- Basin Setting
- Groundwater Communications Portal



# Groundwater Model Update

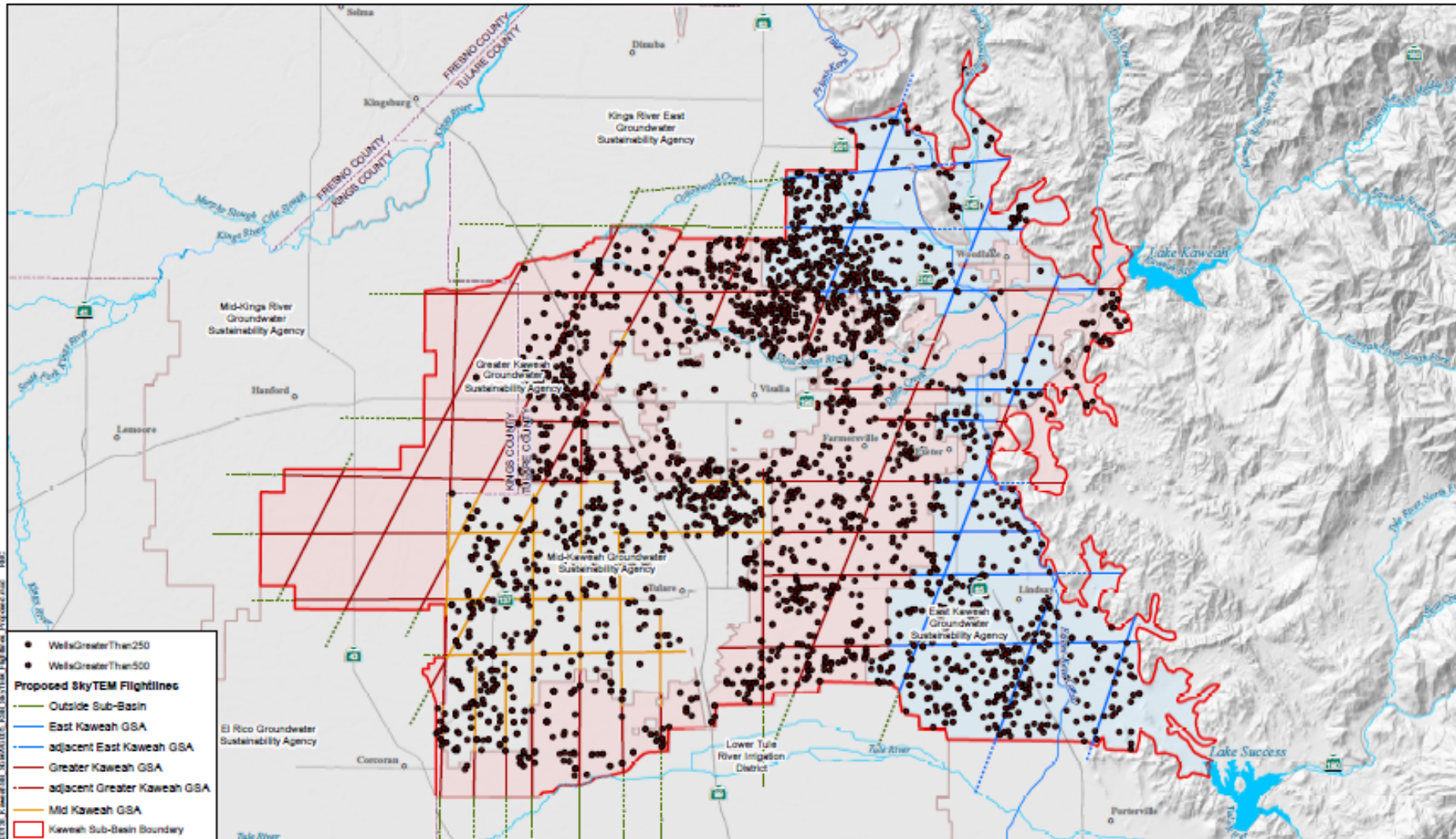


# Groundwater Model Update

- Phase 1: KDWCD MODFLOW model review is complete.
- Phase 2: Expand the model spatially and temporarily
  - Model grid has been expanded and refined to 500 ft x 500 ft
  - Groundwater Elevation database for calibration targets has been completed
  - Boundary Conditions have been spatially located and are being populated
  - Davids Engineering data has been processed for input into the model.
    - Modeling team is working to develop GW pumping by area.
  - Estimated Completion Date for Draft Calibrated Model: November 2018
- Phase 3: GSA specific model runs
  - Late 2018/Early 2019

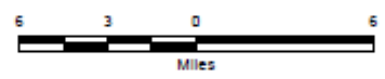


# SKYTEM UPDATE



Downloaded from https://pubs.usgs.gov/ofr/2018/ofr18-011/ by the U.S. Geological Survey on 10/26/2018. For more information, see the full text at https://pubs.usgs.gov/ofr/2018/ofr18-011/

- Wells Greater Than 250
- Wells Greater Than 500
- Proposed SkyTEM Flightlines**
- Outside Sub-Basin
- East Kaweah GSA
- adjacent East Kaweah GSA
- Greater Kaweah GSA
- adjacent Greater Kaweah GSA
- Mid-Kaweah GSA
- Kaweah Sub-Basin Boundary



Kaweah Sub-Basin  
Tulare County, California



PROPOSED SKYTEM FLIGHTLINES  
CLASSIFIED BY GSA  
WITH POTENTIAL LITHOLOGY CONTROL LOCATIONS

OCTOBER 2018 DRAFT FIGURE #





# Status of Data Management System Development

**MID Kaweah SGMA Data Viewer**

Find address or place

**Boundaries**

- Bulletin 118 Groundwater Basins -2016
- Bulletin 118 Groundwater Basins -2003
- County Boundaries
- Disadvantaged Communities Block Groups
- Disadvantaged Communities Places
- Disadvantaged Communities Tracts
- Critically Overdrafted Basins
- Adjudicated Areas
- Water Agencies
- IRWM Regions
- Tribal Trust Boundary
- Tribal Trust Lands
- Reclamation Districts
- Regional Flood Planning Boundaries
- Detailed Analysis Units - Water Plan
- Hydrologic Regions
- Planning Areas - Water Plan
- Region Office Service Areas
- CASGEM Groundwater Basins Prioritization
- CDFW Owned and Operated Lands and Conservation Easements
- State Refuges

**Hydrogeologic Conceptual Model**

Download Layer Data   Clear All Layers

Map labels: Selma, Dinuba, Kingsburg, Hanford, Visalia, Turlock, Corcoran, Pixley, Porterville, Woodlake, Lake Kaweah, Tule River, San Joaquin Valley, Pixley National Wildlife Refuge, CA-198, CA-199, CA-99-N, CA-99-S, CA-65, CA-65-N, CA-65-S, 2481 ft, 190, 22, Road 1.

# Data Management System

- Planned for Deployment By End of October 2018
- Initially Viewing Will be Limited To Information Available from Public Website
- Kaweah Specific Data Sets added as Draft GSP is Completed
- GSA Managers to Have Full Access to Information within their GSPs







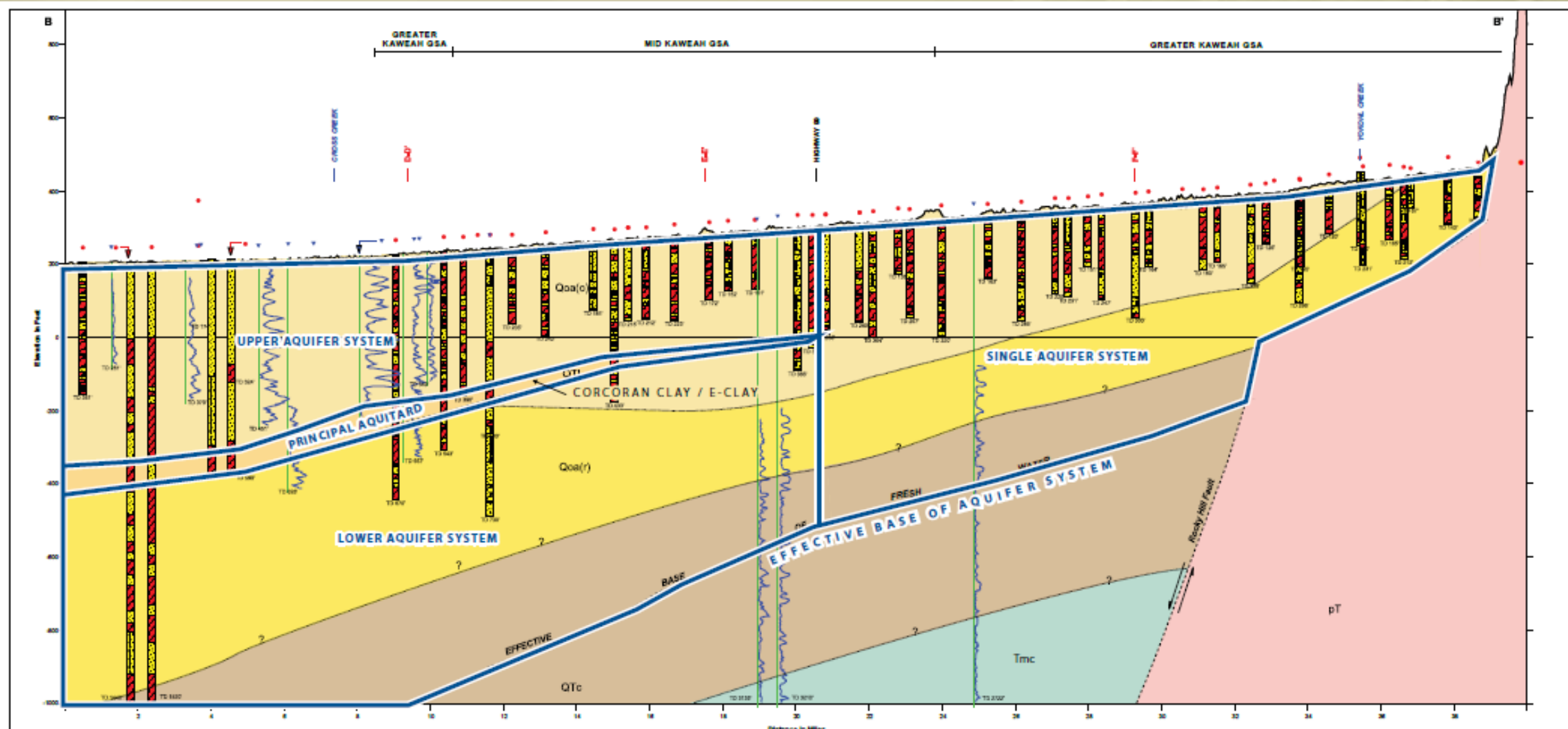
# Basin Setting

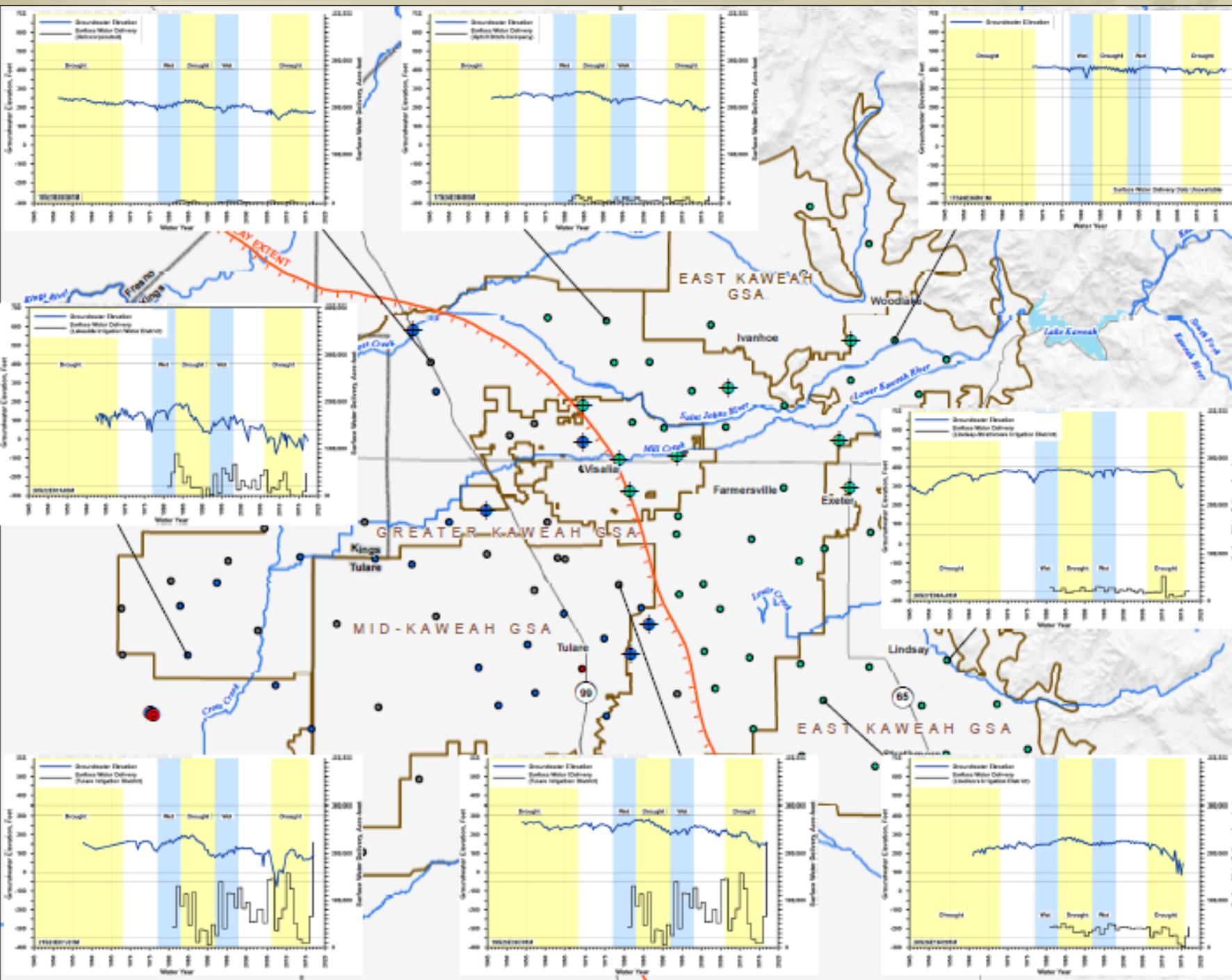
- Managers Draft Released in September and Comments Due October 15<sup>th</sup>
- Currently Working fill data gaps in Water Budget
- Public Draft Available in November





# Hydrogeologic Conceptual Model





**LEGEND**

- Lower Aquifer
- Upper Aquifer
- Single Aquifer
- Unknown
- Dedicated Monitoring Well
- Dual Completion Well
- Monitoring Well

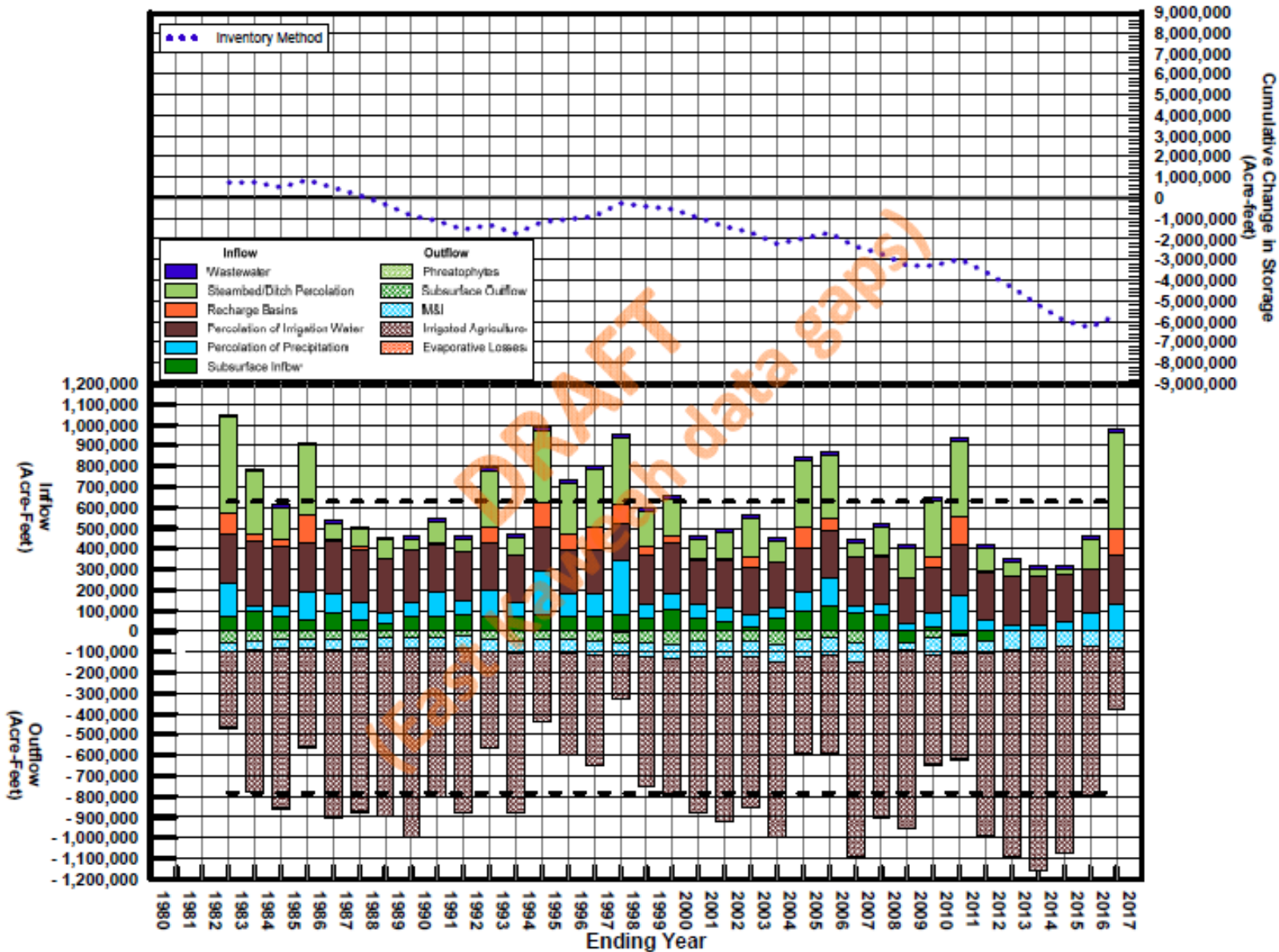
**All Other Features**

- Major Road
- Natural Channel
- Extent of Corcoran Clay (DWR, 1981)
- Kaweah Sub-Basin GSAs
- Counties
- Lake

# Groundwater Flow Conditions



# Detailed Water Budget



# Groundwater Communications Portal

Kaweah Groundwater Communication Portal (GCP)

[Home](#) [About](#) [Calendar](#) [Sign In](#)

Working Together for Sustainability in Kaweah Groundwater Basin

## Welcome to the Kaweah GCP

The Kaweah Groundwater Communication Portal (GCP) tracks meetings and other events related to SGMA implementation in the Kaweah groundwater basin.

The purpose of the GCP is to encourage active participation of groundwater users in GSP development for the basin. Use the GCP to participate in the following ways:

- View the calendar to see planned events
- Register for an event to receive updates if the event details change
- Sign up as an Interested Party to be notified when a new event is scheduled

For more information, please visit the Groundwater Sustainability Agency websites at:

- [East Kaweah Groundwater Sustainability Agency](#)
- [Greater Kaweah Groundwater Sustainability Agency](#)
- [Mid Kaweah Groundwater Sustainability Agency](#)

[Register as interested party](#)

### Participating GSAs





# Groundwater Communications Portal


Kaweah Groundwater Communication Portal (GCP) [Home](#) [About](#) [Calendar](#) [Dashboard](#) [Events](#) [Sign Out](#)

[Home](#) / [Event Calendar](#)

Filters: [All](#) [East Kaweah GSA](#) [Greater Kaweah GSA](#) [Mid-Kaweah GSA](#) [Subbasin Coordination](#)

[<](#) [>](#) [today](#) **September 2018** [month](#) [week](#) [day](#)

Sun	Mon	Tue	Wed	Thu	Fri	Sat
26	27	28	29	30 8:36a East 9:15a Mid 9:18a Greater	31 9:15a Other	1
2	3	4	5	6	7	8
9	10	11	12	13	14	15
16	17	18	19	20	21	22
23	24	25	26	27	28	29
30	1	2	3	4	5	6



consultants